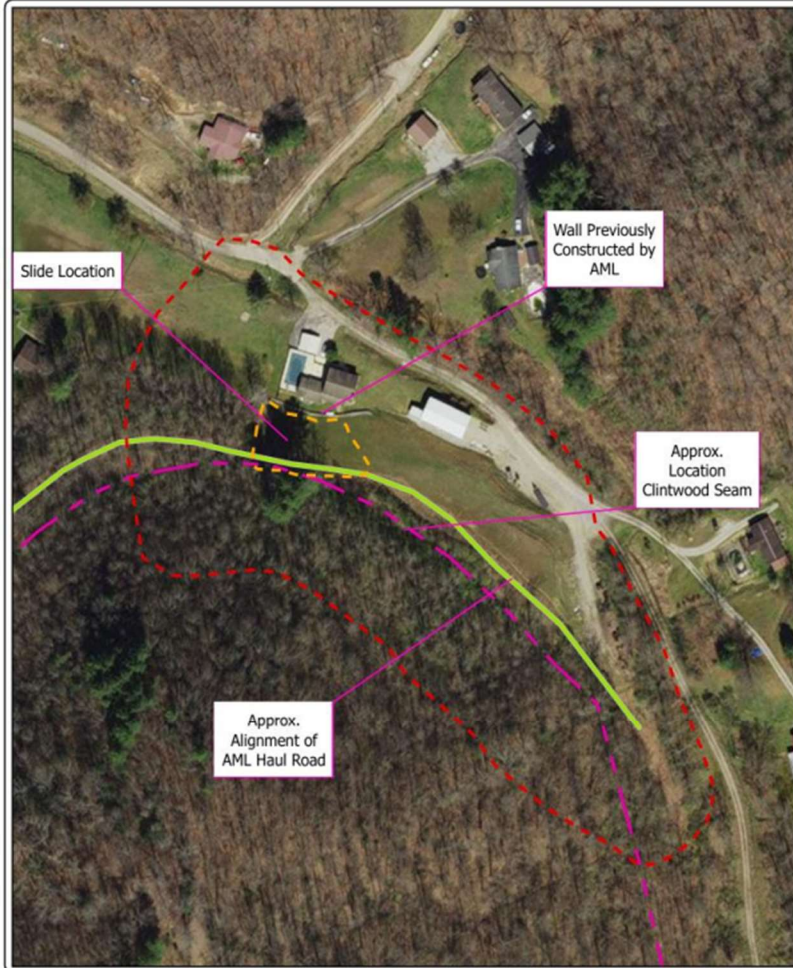


## Project Map



Hays Branch Landslide Emergency II  
Project No. 22522  
Wise County, VA



0 100 200 400  
Feet





Hays Branch Landslide Emergency II - 22522 Disposal Site



Well Traveled Access  
Road To Be Maintained

Approximate GPS  
Coordinates for Center  
of Disposal Site =  
37 03' 13.94" N  
82 35' 30.08" W